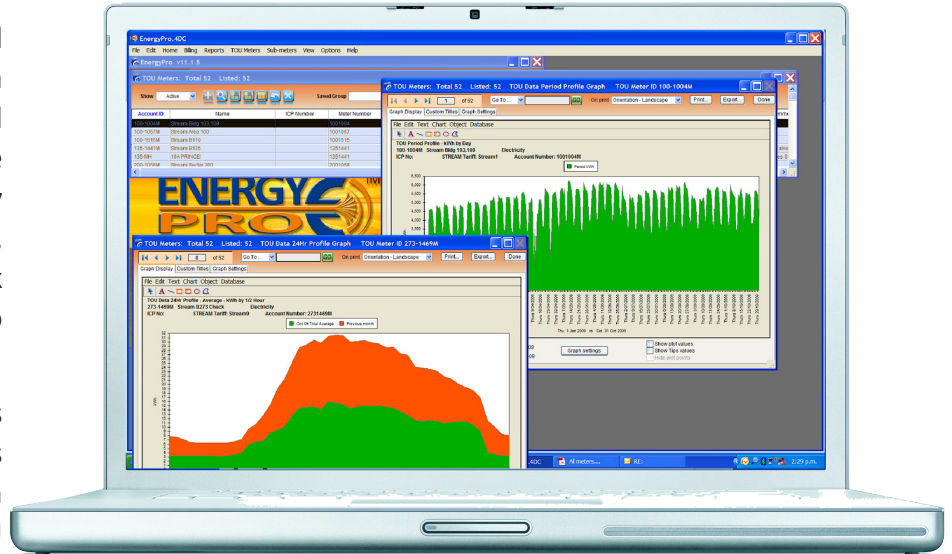


Harnessing the true power of half hour data

Half hour meters (commonly referred to as TOU meters) have provided a number of benefits to large commercial and industrial organizations. Some of the key benefits include the ability to purchase electricity competitively, being able to load shift to avoid peak line and energy charges, and ability to analyse consumption profiles.

However, the web based systems currently available to assist customers are inherently limited in their application - especially if there are many TOU meters involved and the customer's requirements are complex.


LESS TIME
MAXIMISE REDUCTIONS
TRACK SAVINGS
INTEGRATED
DESKTOP AUDIT

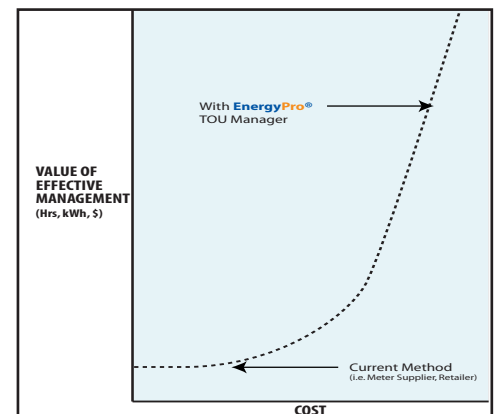
The **EnergyPro®** TOU Manager is a leading edge management tool, providing dynamic management of all TOU metered sites with control and confidence.

It enables Energy and Sustainability Managers to lift their understanding and management ability, to achieve desired results. These were previously either impossible or done in a very limited, time consuming way.

In essence, the TOU Manager forms an integral part of an Energy Manager's tool kit. It provides a simple yet powerful way to effectively manage all TOU meter usage.

Features and Benefits

- **Quickly** imports all TOU meters' half hour data at once, whilst providing exception reports at the same time. This is a great way to quickly "zero in" on "problem" sites and take **prompt corrective action**.
- When integrated with **EnergyPro®** Billing Manager, it instantly provides accurate invoice accruals thereby **freeing up time & staff** to focus on other important projects.
- Clearly understand the load patterns. e.g. base load, equipment on-off; with tools to help communicate and **effect changes**.
- Ability to superimpose **different period** load patterns to quickly see & **quantify before and after** change.
- Ability to carry out a thorough **desktop audit** on day 1 and identifies opportunities for improvements.
- Monitor and report consumption and demand on an ongoing basis in an efficient and effective manner.
- Dynamic **robust tool** developed by practitioners for energy management practitioners.



We are currently in the process of piloting the **EnergyPro®** TOU Manager with selected customers, to demonstrate these benefits before releasing this product to market. If you are keen to take part in this pilot project, please contact us.